

Coffs Harbour Newsletter 1, 2018

Well, here we are again thinking of the end of season trip to Coffs Harbour and the encounter with the arch enemy from across the border, Commercials Hockey Club - Brisbane.

STOP PRESS: As you are probably aware this year we are not only taking the men's players and supporter but **also the women's element of the club and any of your supporters to Coffs Harbour for games against the Queenslanders.**

Let's see what time of year it is now:

Has the hockey season started? Yes No

Has the bowls night been run? Yes No

Has the bus been booked? Yes No

Has the Coffs Harbour accommodation been organised? Yes No

Has the synthetic turf been booked? Yes No

Is it time to start thinking of the end of season trip? Yes No

Some History: The Tigers men have been playing against Commercials at the end of each season for the last 26 years commencing in 1992. Well, that is minus one year when Commercials didn't turn up as they thought that it was the games were the following week or so their excuse goes, obviously frightened. However we managed to have a great weekend without them as we played a Coffs Harbour team on both days instead and very much enjoyed their company as usual.

This year we again have the "Big Bus" and our friendly driver Craig to Coffs and back again in one piece, oh well that's the plan. As games against Commercials Hockey Club I would like to see at travellers this year.



to see that we all get this is our 27 years of least 40 fully paid

Now obviously, we need hockey players both men and women, but, we can accommodate a number of non-playing supporters. If you went last year or for the ladies, the drill is the same as for the previous two & half decades + two and is as follows:

DO NOT LOSE YOUR NEWSLETTER, because **the following information is important!**

This year the **weekend** is: **9th to 11th November 2018**

We **depart:** **Newcastle Hockey Centre at 10.00 am 9th November 18**

We **return:** **Around 7.00 pm 11th November 18 to Hamilton North Bowling Club**

In between, will be a couple of **hockey games, accommodation, return bus trip, a couple of breakfasts, a couple of lunches** and you will get a **very exclusive walkout shirt**.

As you can appreciate the more people who go the cheaper it becomes as a large proportion of the cost is the bus hire so the intent is for the cost to be reduced and we're aiming for an all in cost of \$ 350 to \$ 400 at worst case so here it is below:

The all in **cost** at this time is as follows:

The cost will be no more than \$400 per person, however if we can reduce the cost further I'll give some monies back on the bus or closer to the date but it's all dependent on numbers, the more the merrier and the cheaper the price.

Therefore, I'm after a \$100 deposit first up now to get the ball rolling at this early stage to give me an idea of the numbers for accommodation.



as it is needed

First in with deposits are on the bus. Don't be late or you might miss out.

Monies can be deposited at:

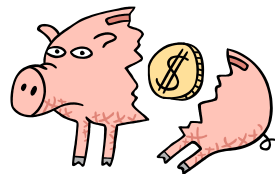
The Greater Newcastle Building Society

BSB -637000

A/C Number – 720797682

Please include your name on the deposit.

Note: If you are required to place a name on the account from your bank or financial institution then it is as follows: Rod Schimann



I would like **40 definite starters** and I need to know **names, the sooner the better: No later than 1st Jun 18**

Col Doyle – The Apprentice (I know I'm probably a little old to be an Apprentice but after Don Harower organised the trip for the first 24 years I guess I'm still an Apprentice).

(M) 0422 965 991

Ladies Contact: either myself or **Jackie**